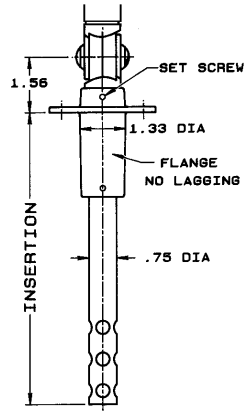


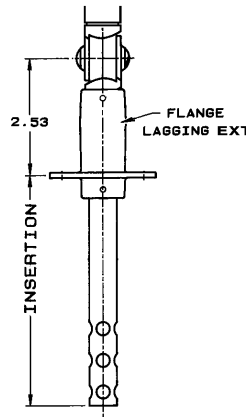
CASE: Modern V-shape design with parts molded of GE Valox® polyester in black textured finish. Heavy glass protected front firmly secured against rattles by spring action. **STEM:** Perforated Aluminum. **LOCKING DEVICE:** A hand rotatable friction lock with the angle adjusting screw work independently to provide a full 360° positioning of thermometer case and stem. **ADJUSTABLE JOINT:** GE Valox finished to match case. **ACCURACY:** Within 1% of scale range. Silicone shock mounted for lasting durability. **SCALE:** White coated aluminum with permanently baked bold black markings. **FILL:** Blue liquid.

© Valox is a registered trademark of the General Electric Co.
 © Vari-angle is a registered trademark of Weiss Instruments, Inc.

Scale Size	X
7"	9 3/4"
9"	11 3/4"



Air Duct Stem



VARI-ANGLE INDUSTRIAL THERMOMETERS					
QTY.	CAT. NO.	SCALE LGTH.	STEM LGTH	RANGE	TAG
	9VD6	9"	6"		

°F RANGES	SCALE DIVISION
40-0-110°F	2°
0-120°F	1°
0-160°F	2°
30-180°F	2°
30-240°F	2°
30-300°F	2°
50-400°F	5°
50-550°F	5°

NOTE: Dual and Centigrade Scales available.

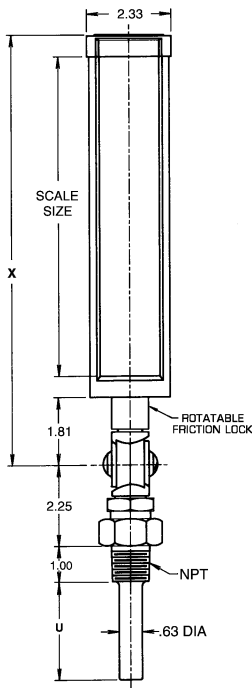
CUSTOMER _____
 PROJECT _____
 ENGINEER _____
 PRO or P.O. NO. _____



WEISS INSTRUMENTS, INC.
 HOLTSMILLE, NEW YORK 11742

DESCRIPTION: **Air Duct Stem**
Vari-angle® Industrial Glass Thermometer
 Full Conformance with Fed Spec. GG-T-321D

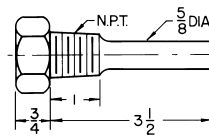
DRAWN BY: _____ DATE: _____ DRAWING: _____



CASE: Modern V-shape design with parts molded of GE Valox® polyester, in black textured finish. Heavy glass protected front firmly secured against rattles by spring action. **STEM:** For 3 1/2" stems only and ranges up to and including 300°F, the stem material is a precision die cast Zamac alloy. For ranges above 300°F, bulb chamber is a precision machined aluminum alloy with copper plated steel stem extension. *For Separable Socket connections only.* **LOCKING DEVICE:** A hand rotatable friction lock with the angle adjusting screw work independently to provide a full 360° positioning of thermometer case and stem. **ADJUSTABLE JOINT:** GE Valox finished to match case. **ACCURACY:** Within 1% of scale range. Silicone shock mounted for lasting durability. **SCALE:** White coated aluminum with permanently baked bold black markings. **FILL:** Blue liquid.

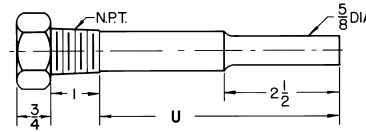
® Valox is a registered trademark of the General Electric Co.
 ® Vari-angle is a registered trademark of Weiss Instruments, Inc.

Scale Size	X
7"	9 3/4"
9"	11 3/4"



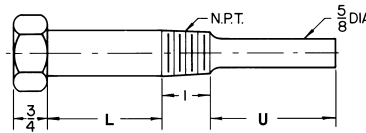
Standard Stem - E Series

CAT. NO.	NPT
E35-75BS	3/4"



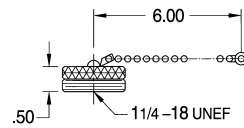
Long Stem - ER Series

CAT. NO.	U	NPT
ER6-75BS	5	3/4"
ER9-75BS	8	3/4"
ER12-75BS	11	3/4"



Extension Neck - ESS, EN, ENS Series

CAT. NO.	L	U	NPT
ESS35-75BS	1	11/2	3/4"
EN6-75BS	2 1/2	2 1/2	3/4"
ENS9-75BS	2 1/2	5 1/2	3/4"
ENS12-75BS	2 1/2	8 1/2	3/4"



Cat.No. ECC - Brass Cap & Chain

VARI-ANGLE INDUSTRIAL THERMOMETERS						
QTY.	CAT. NO.	SCALE LGTH.	STEM LGTH	RANGE	TAG	
	9VU35	9"	3 1/2"			
	9VU6	9"	6"			

THERMOWELLS						
QTY.	CAT. NO.	STEM LGTH.	INSERTION	NPT	MATERIAL	TAG
	E35-75BS	3 1/2"	2 1/2"	3/4"	BRASS	
	ER6-75BS	6"	5"	3/4"	BRASS	
	EN6-75BS	6"	2 1/2"	3/4"	BRASS	

°F RANGES	SCALE DIVISION
40-0-110°F	2°
0-120°F	1°
0-160°F	2°
30-180°F	2°
30-240°F	2°
30-300°F	2°

STEM	CAT. NO.	CAT. NO.
3 1/2"	7VU35	9VU35
6"	7VU6	9VU6
9"	7VU9	9VU9
12"	7VU12	9VU12

NOTE: Dual and Centigrade Scales available.

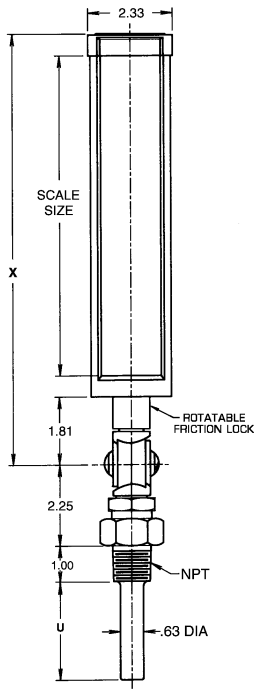
CUSTOMER _____
 PROJECT _____
 ENGINEER _____
 PRO or P.O. NO. _____



WEISS INSTRUMENTS, INC.
 HOLTSVILLE, NEW YORK 11742

DESCRIPTION:
Vari-angle® Industrial Glass Thermometer

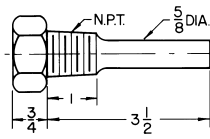
DRAWN BY: _____ DATE: _____ DRAWING: _____



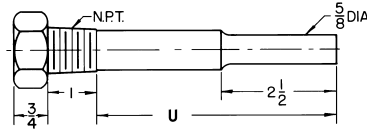
CASE: Modern V-shape design, high pressure die cast aluminum in black textured finish. Heavy glass protected front firmly secured against rattles by spring action. **STEM:** For 3 1/2" stems only and ranges up to and including 300°F, the stem material is a precision die cast Zamac alloy. For ranges above 300°F, bulb chamber is a precision machined aluminum alloy with copper plated steel stem extension. *For Separable Socket connections only.* **LOCKING DEVICE:** A hand rotatable friction lock with the angle adjusting screw work independently to provide a full 360° positioning of thermometer case and stem. **ADJUSTABLE JOINT:** Die cast aluminum finished to match case. **ACCURACY:** Within 1% of scale range. Silicone shock mounted for lasting durability. **SCALE:** White coated aluminum with permanently baked bold black markings. **FILL:** Blue liquid.

© Vari-angle is a registered trademark of Weiss Instruments, Inc.

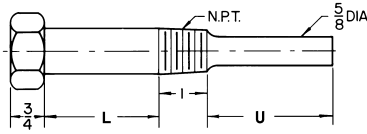
Scale Size	X
7"	9 3/4"
9"	11 3/4"



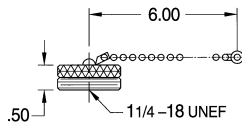
Standard Stem - E Series



Long Stem - ER Series



Extension Neck - ESS, EN, ENS Series



Cat.No. ECC - Brass Cap & Chain

CAT. NO.	NPT
E35-75BS	3/4"

CAT. NO.	U	NPT
ER6-75BS	6	3/4"
ER9-75BS	9	3/4"
ER12-75BS	12	3/4"

CAT. NO.	L	U	NPT
ESS35-75BS	1	11/2	3/4"
EN6-75BS	2 1/2	2 1/2	3/4"
ENS9-75BS	2 1/2	5 1/2	3/4"
ENS12-75BS	2 1/2	8 1/2	3/4"

VARI-ANGLE INDUSTRIAL THERMOMETERS					
QTY.	CAT. NO.	SCALE LGTH.	STEM LGTH	RANGE	TAG
	A9VU35	9"	3 1/2"		
	A9VU6	9"	6"		

THERMOWELLS						
QTY.	CAT. NO.	STEM LGTH.	INSERTION	NPT	MATERIAL	TAG
	E35-75BS	3 1/2"	2 1/2"	3/4"	BRASS	
	ER6-75BS	6"	5"	3/4"	BRASS	
	EN6-75BS	6"	2 1/2"	3/4"	BRASS	

°F RANGES	SCALE DIVISION
40-0-110°F	2°
0-120°F	1°
0-160°F	2°
30-180°F	2°
30-240°F	2°
30-300°F	2°
50-400°F	5°
50-550°F	5°

NOTE: Dual and Centigrade Scales available.

STEM	CAT. NO.	CAT. NO.
3 1/2"	A7VU35	A9VU35
6"	A7VU6	A9VU6
9"	A7VU9	A9VU9
12"	A7VU12	A9VU12

CUSTOMER _____
 PROJECT _____
 ENGINEER _____
 PRO or P.O. NO. _____



WEISS INSTRUMENTS, INC.
 HOLTSMILLE, NEW YORK 11742

DESCRIPTION: Aluminum Case Design
Vari-angle® Industrial Glass Thermometer
 Full Conformance with Fed Spec. GG-T-321D

DRAWN BY: _____ DATE: _____ DRAWING: _____